



Raise the Youth Foundation
are working with

- ~ 1 Message
- ~ Wave Adventure
- ~ Raise Education &
Wellbeing School

to safeguard young people
and families from
criminal exploitation.

This 3 page document
has been produced
to accompany some
educational work
with your child and
ensure there is a whole
family approach.

Please read this to help
safeguard your child.

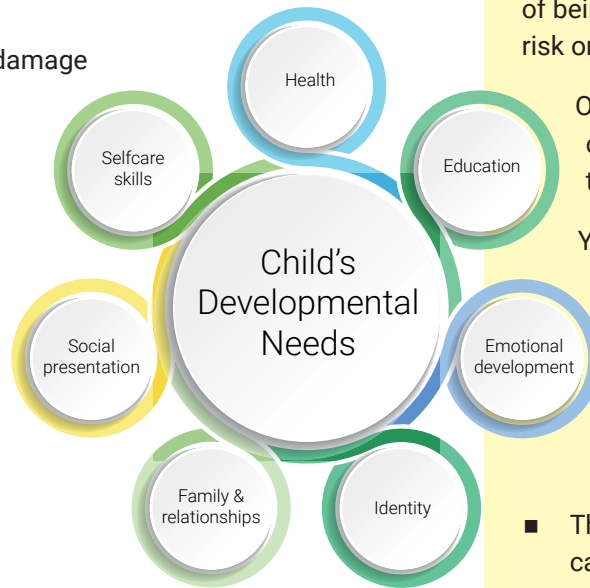
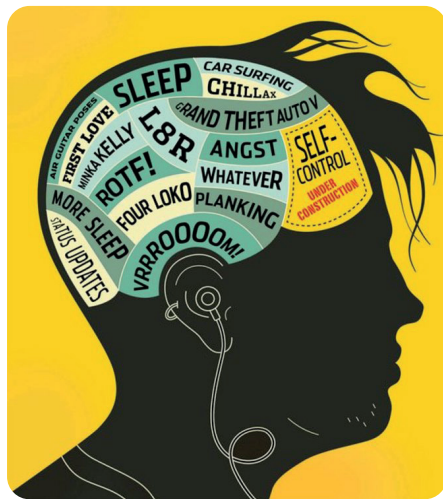


About child criminal exploitation

Child criminal exploitation is the manipulation, coercion and control of children and young people to commit crimes, usually for the benefit of abusive adults or peers.

Locally we know of young people being used or paid to:

- Hide, carry or sell drugs, phones, computers or weapons (also known as county lines)
- Look after buildings / grows / houses
- Steal keys or steal vehicles
- Commit acts of violence threats or damage
- Commit acts of hate



Exploitation

noun

The act of using someone unfairly for your own advantage

Offenders often recruit young people to help them increase profits from their offending and reduce their own chances of being caught by putting the risk onto others.

Other young people can and do recruit their peers.

Young people often don't accept or recognise they are being exploited, thinking it's their choice, but also don't like to tell people due to:

- The risk of being caught and arrested
- because they have mistaken loyalty to the exploiter
- because they are scared for themselves or their friends or their family
- Because they think they need the money or they think they can get rich quick
- Because the risks are presented as exciting by the abuser

Vulnerability of young people

We have seen harm and distress caused to young people, parents and communities, often, but not always, affecting the most vulnerable. Our aim is to ensure parents and children are educated, know what to look for and where to access support and information.

They often don't understand the risks they are taking, because they are children, which is one of the reasons why exploiting children is unacceptable.

All children and young people are vulnerable because of their age, inexperience, immaturity and brain development.

Your child has received some education about this issue.

Please learn more about the subject, find out who can help and how they can help, then start a conversation and listen to your child's thoughts and feelings.

The school safeguarding lead is Michelle Gleeson. Their email address is:

michelle.gleeson@raisetheyouth.co.uk



Advice for parents

PACE (Parents Against Child Exploitation)

www.paceuk.info/for-parents/advice-centre

Trapped

www.programmechallenger.co.uk/public/what_we_do/trapped

NSPCC

www.nspcc.org.uk/what-is-child-abuse/types-of-abuse/gangs-criminal-exploitation/#todo

Safeguarding your child

DSL details

Bolton Children's Services

www.boltonsafeguardingchildren.org.uk/worried-child

Bolton Youth Offending Team

www.bolton.gov.uk/youth-support/youth-offending

Reporting an issue

Greater Manchester Police

www.gmp.police.uk

Crime stoppers

www.crimestoppers-uk.org

Help with a campaign

Children's Society

www.childrensociety.org.uk/information/professionals/resources/defining-child-criminal-exploitation

Follow us

RTY

www.raisetheyouth.co.uk
www.instagram.com/raise_the_youth_foundation
www.facebook.com/raisetheyouth
www.twitter.com/raisetheyouth

1 Message

www.1message.org.uk

Wave Adventure

www.waveadventure.org.uk

